



Case presentation

**Pusan national University
Department of internal medicine
Jonghyun Lee**

M/68



CC) abdominal pain

P.I) 배꼽 주변부에 통증이 있어 타병원에서 시행한 초음파상 담낭에 4.7cm 크기의 종물 관찰되어 내원.

P.Hx) HTN / DM / Hepa / TBc : - / - / - / -

20.11.10 hernia repair Op

s/p Rt. Nephrectomy d/t TBc

s/p appendectomy

Lt. renal cyst

S.Hx) 소주 0.5병/일(30yr), 30년 전 금연

F.Hx) -

Lab finding(20.11.25)

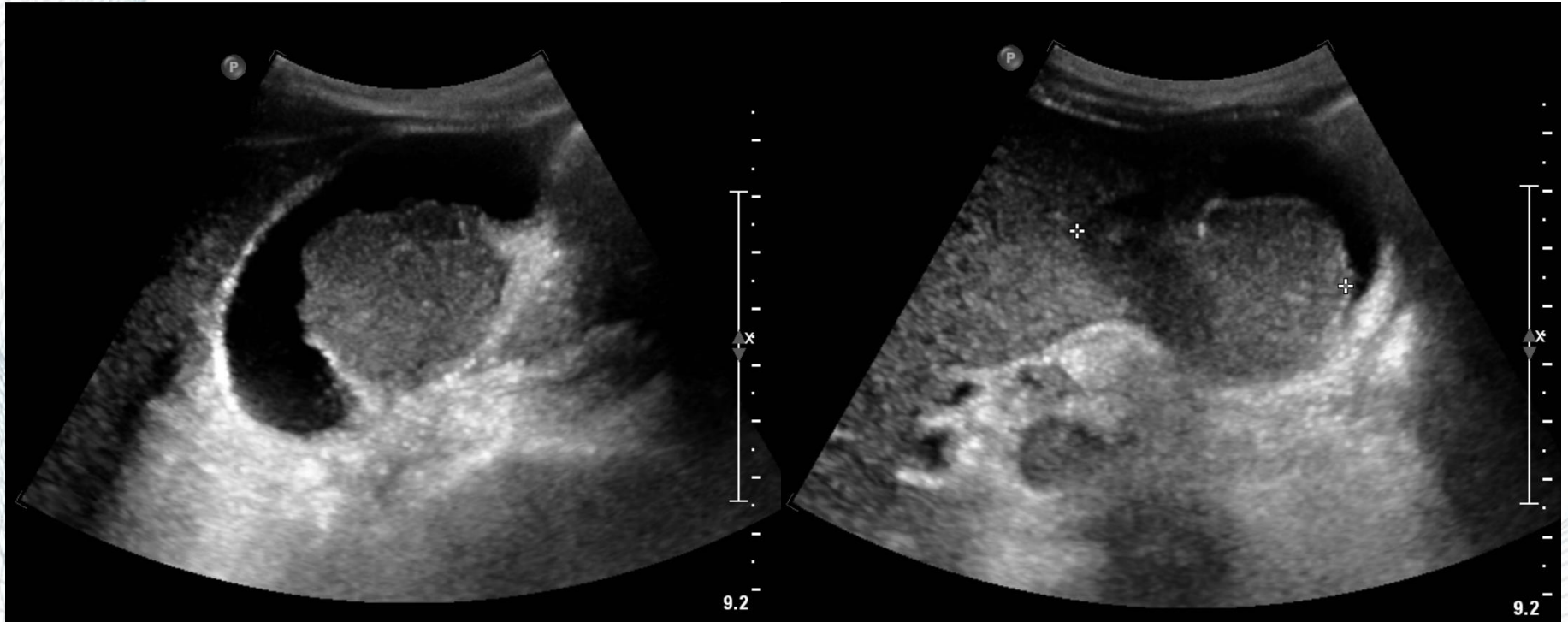


CBC		
WBC	<u>12,160</u>	/uL
neutrophil	87.7	%
Hb	13.2	g/dL
PLT	329,000	/uL

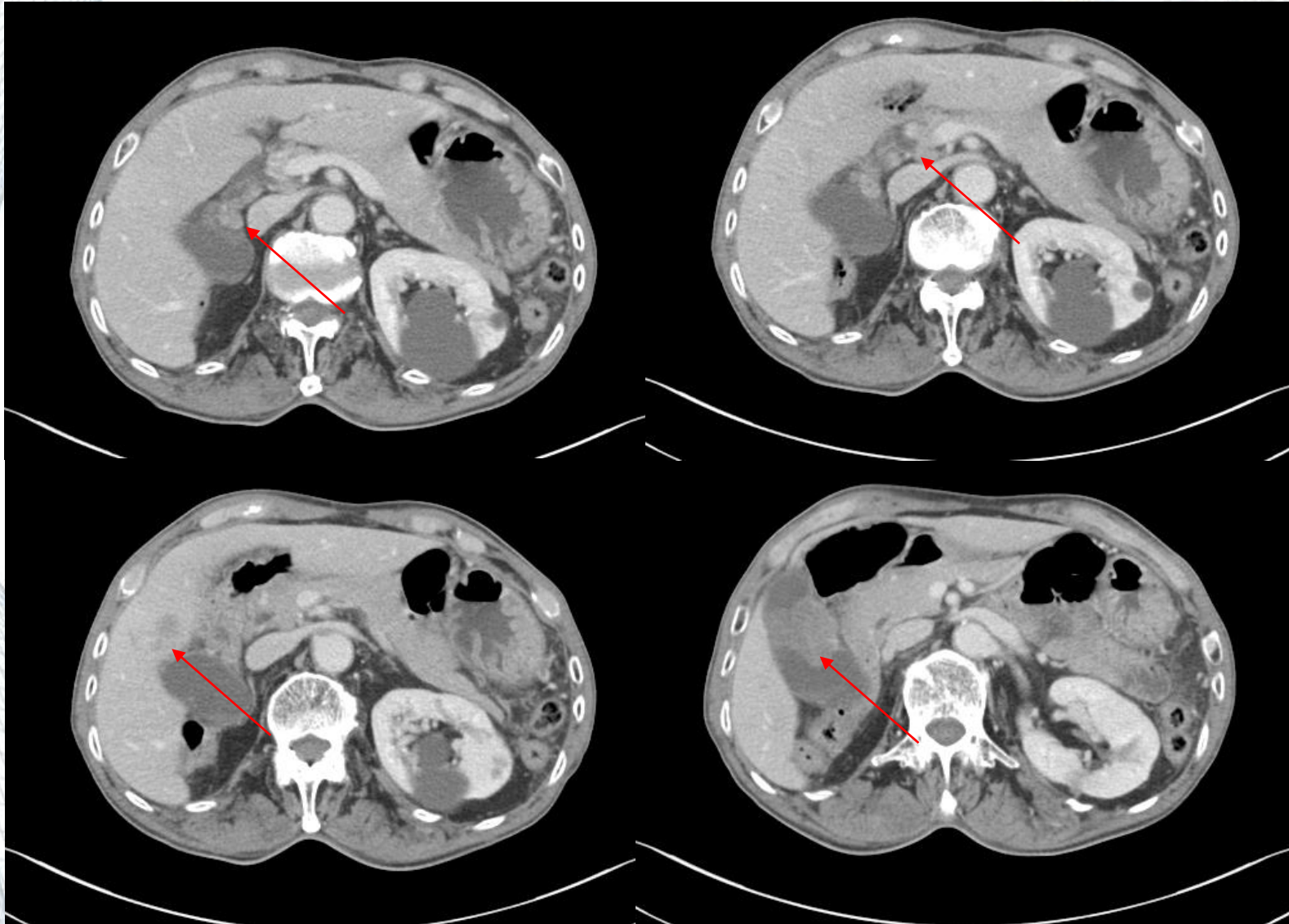
GGT	27	U/L
CRP	0.70	mg/dL
Amy/Lipa	92.5/34.5	U/L
CA19-9	21	U/mL
CEA	3	ng/mL

Biochemistry		
AST/ALT	26/14	U/L
ALP/LDH	80/272	U/L
TB	0.67	mg/dL
TP/ALb	7.21/4.36	g/dL
BUN/Cr	20.2/0.99	mg/dL
UA	6.04	mg/dL
Ca/P	9.82/3.23	mg/dL
Na/K	139.4/4.32	mEq/L

20.11.25 US abdomen(타병원)



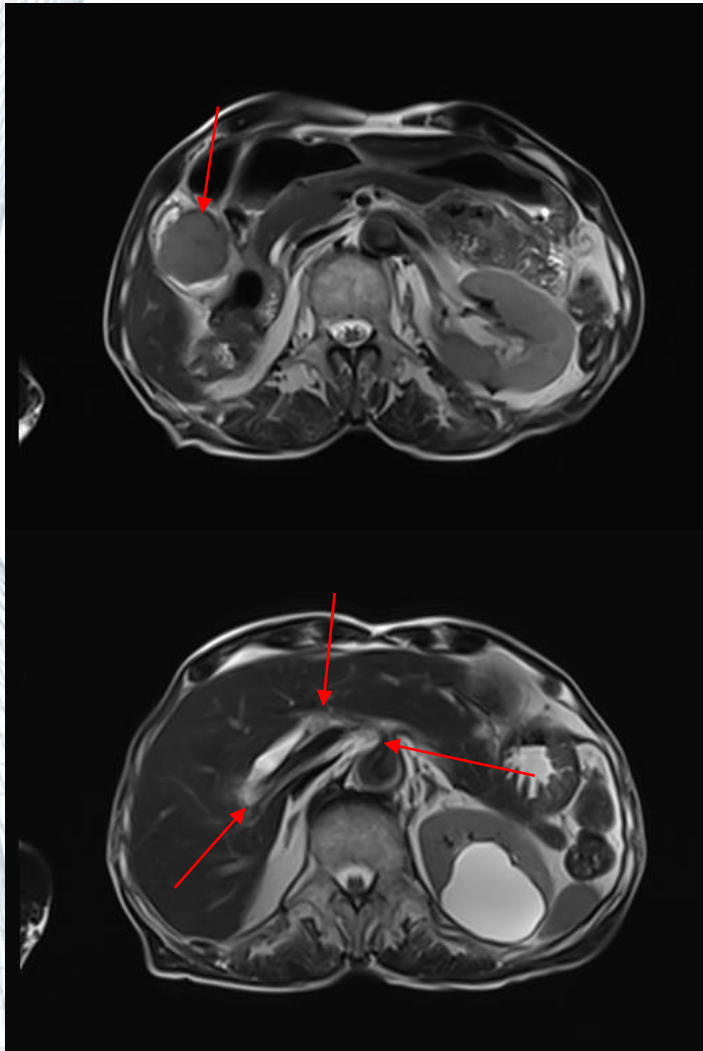
20.11.25 CT abdomen



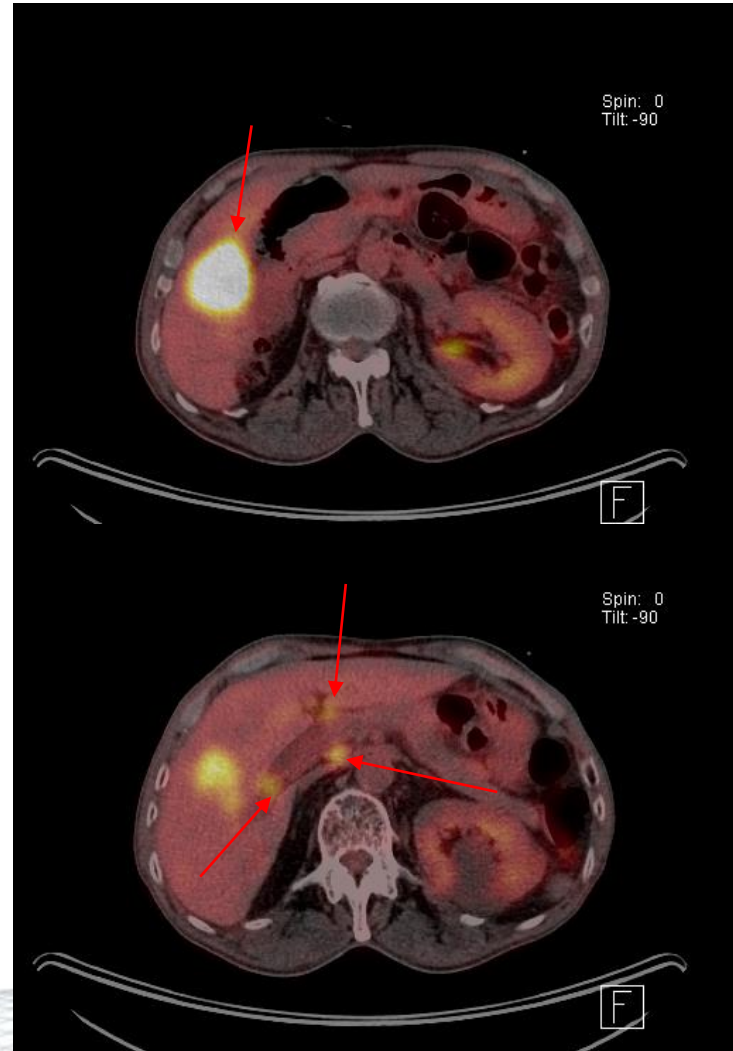
MCRP & PET-CT



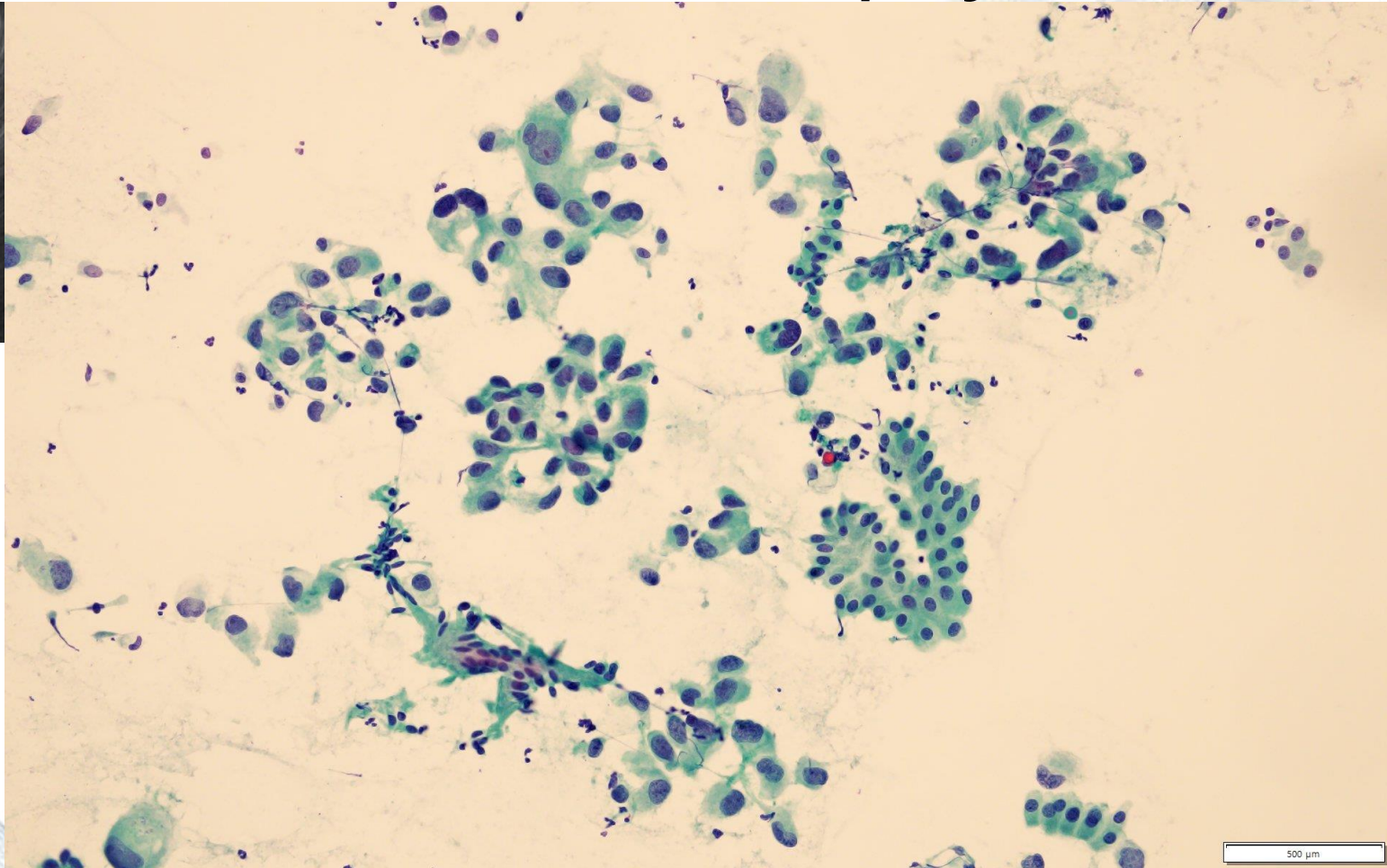
20.12.10 MCRP



20.12.14 PET CT



20.12.15 EUS Biopsy



Aspiration from lymph node, **metastatic adenocarcinoma** (Papanicolaou stain, x200).

Initial Assessment and Plan



- Initial assessment
 - Unresectable gallbladder cancer
/c Liver, multiple LN meta
- Initial plan
 - Palliative chemotherapy

Palliative chemotherapy



- 2020.12.24~2021.02.05
 - Gem + Cis + ABR (q3wk)
- 2020.12.24 Gem + Cis + ABR #1
- 2021.01.15 Gem + Cis + ABR #2
- 2021.02.05 Gem + Cis + ABR #3

Progress note



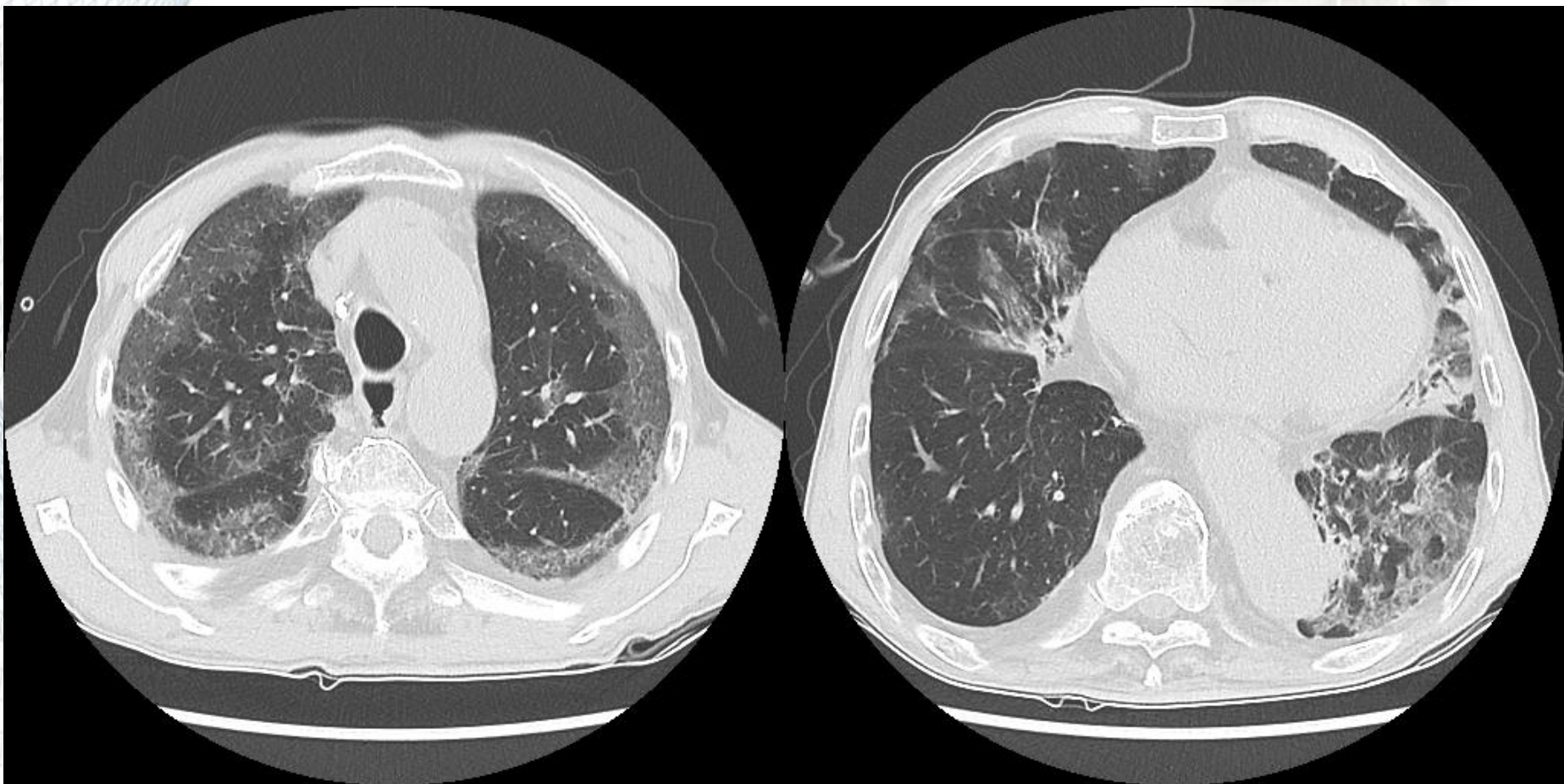
- Dyspnea
- 20.02.10 COVID 19 +
- Pneumonia
- ARDS

- CTx 연기

CBC		
WBC	<u>1610</u>	/uL
neutrophil	72.7	%
Hb	11.9	g/dL
PLT	255,000	/uL
CRP	6.98	mg/dL

Biochemistry		
AST/ALT	27/15	U/L
ALP/LDH	54/332	U/L
TB	0.30	mg/dL
TP/ALb	6.56/3.76	g/dL
BUN/Cr	28.7/1.30	mg/dL

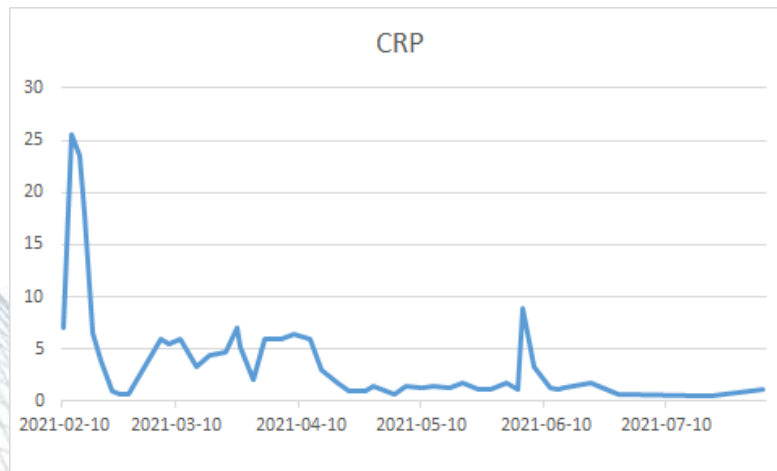
21.02.12 CT chest Non CE



Progress note

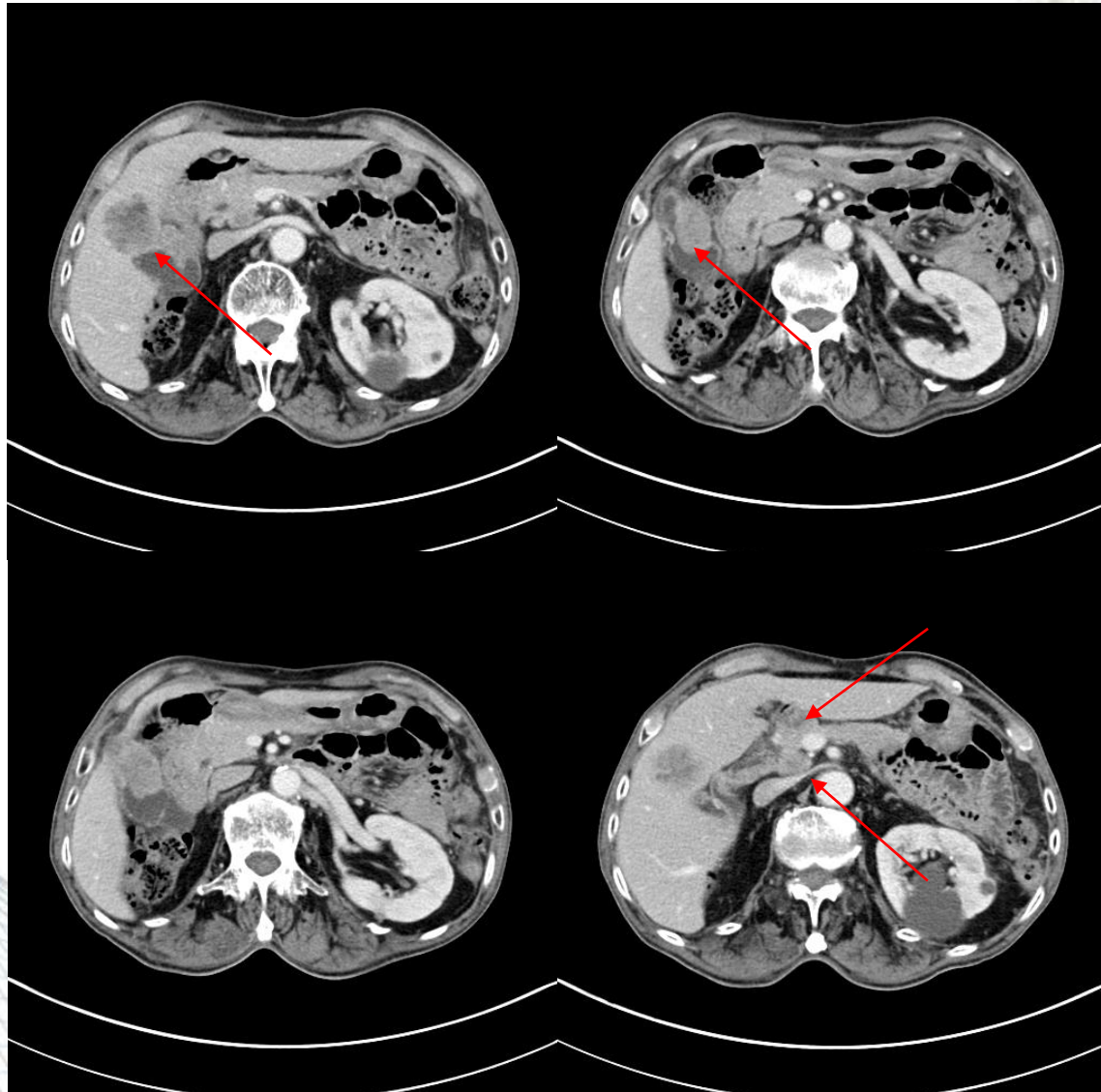


- Remdesivir, Antibiotics
- 21.2.15~21.3.18 Vent care
- 21.4.1~21.6.28 Rehabilitation, infection control

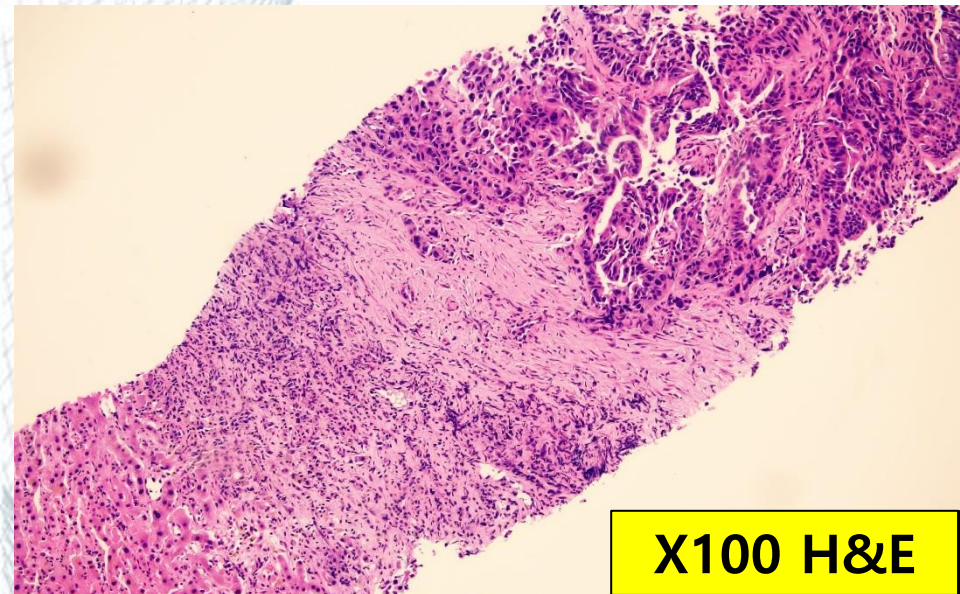


- 21.7.20 소화기내과 외래방문

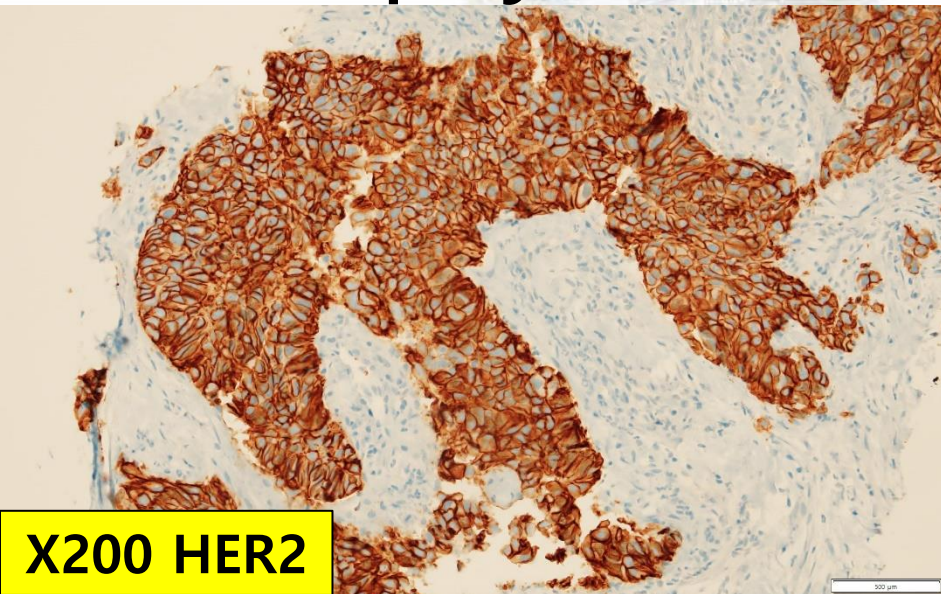
21.07.22 CT abdomen



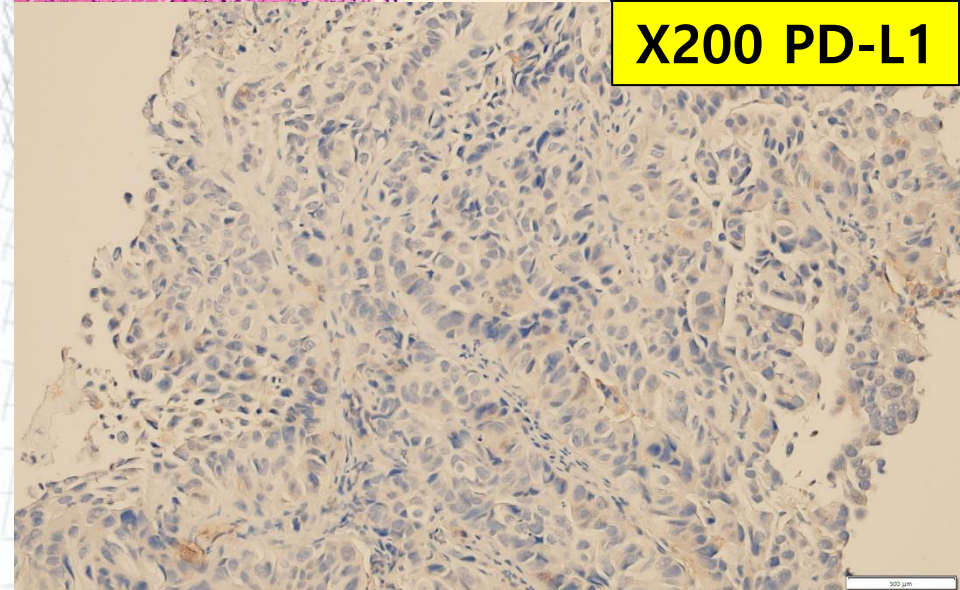
21.07.22 Liver biopsy



X100 H&E



X200 HER2



X200 PD-L1

• Liver, site not specified, biopsy :
Adenocarcinoma.

Immunohistochemistry

CK7: positive

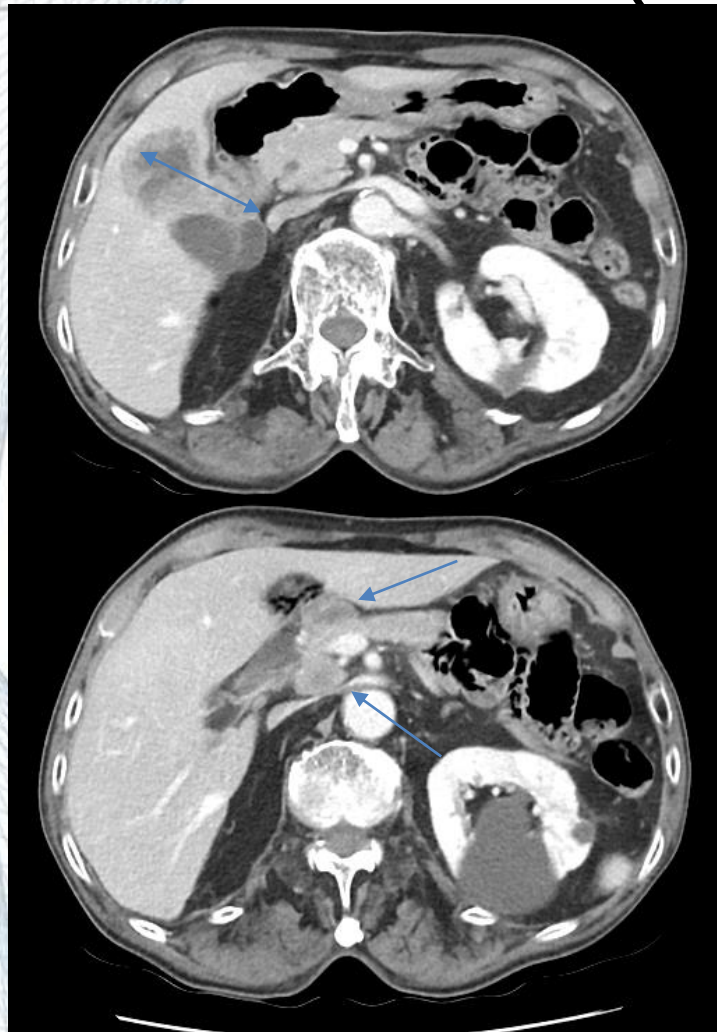
C-erbB2: **Positive (3+)**

PD-L1 22C3

Combined Positive Score (CPS): **<1**

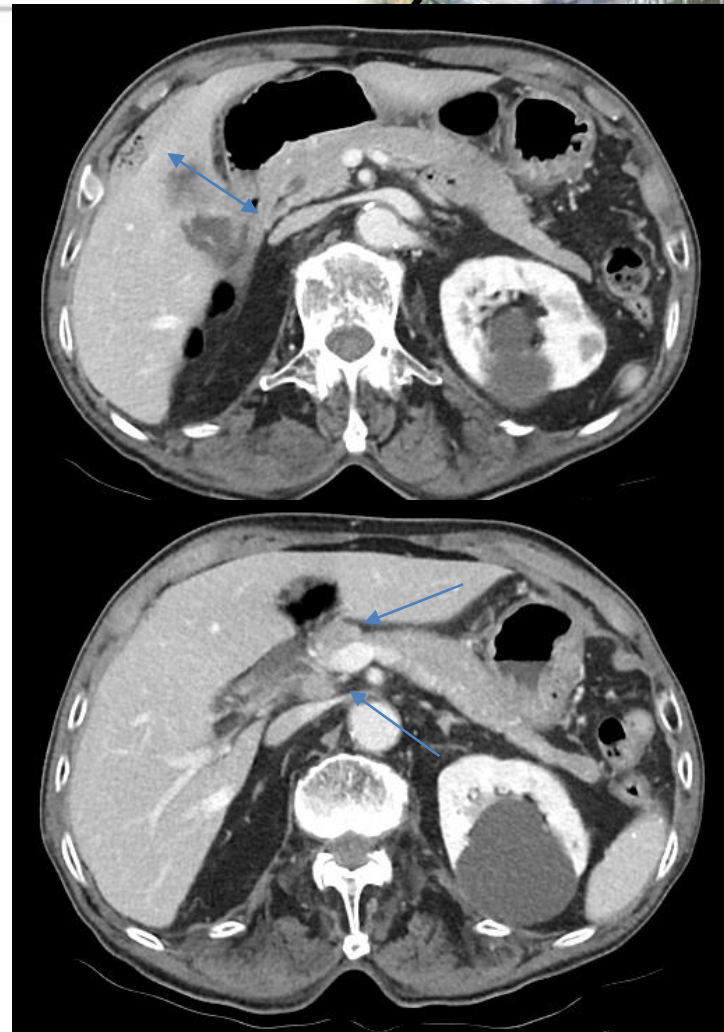
Tumor Proportion Score (TPS): **0%**

ZW25(Zanidatamab)



2021.08.26

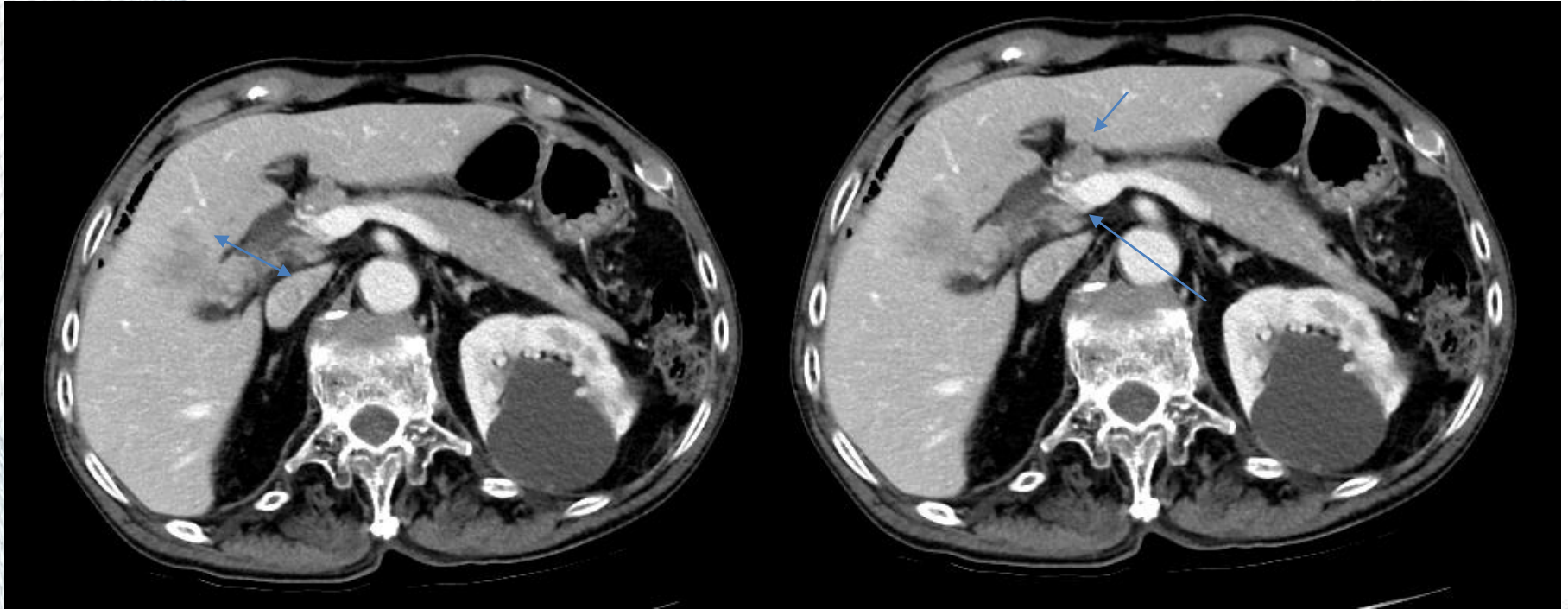
Initial CT



2021.09.03
~ 2021.10.14

2021.10.27
PR

Progression note



2021.12.24 ~ 2022.02.04

2022.02.17 **SD**



Review

Targeted chemotherapy on GB cancer

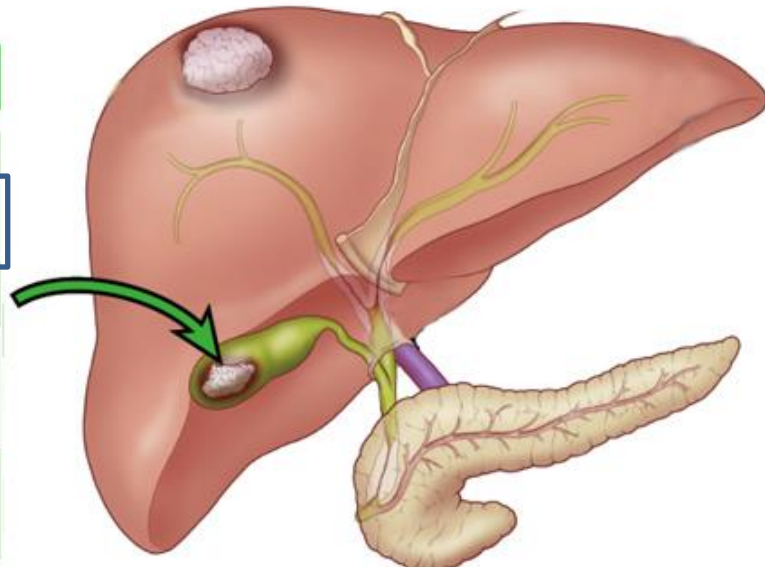
Review



- Treatment options are limited for patients with unresectable, locally advanced or metastatic BTCs progressing after first line treatment.
- Standard second line chemotherapy yields objective response rates (ORR) of < 10% and median overall survival of these patients is < 6 months.

GBC

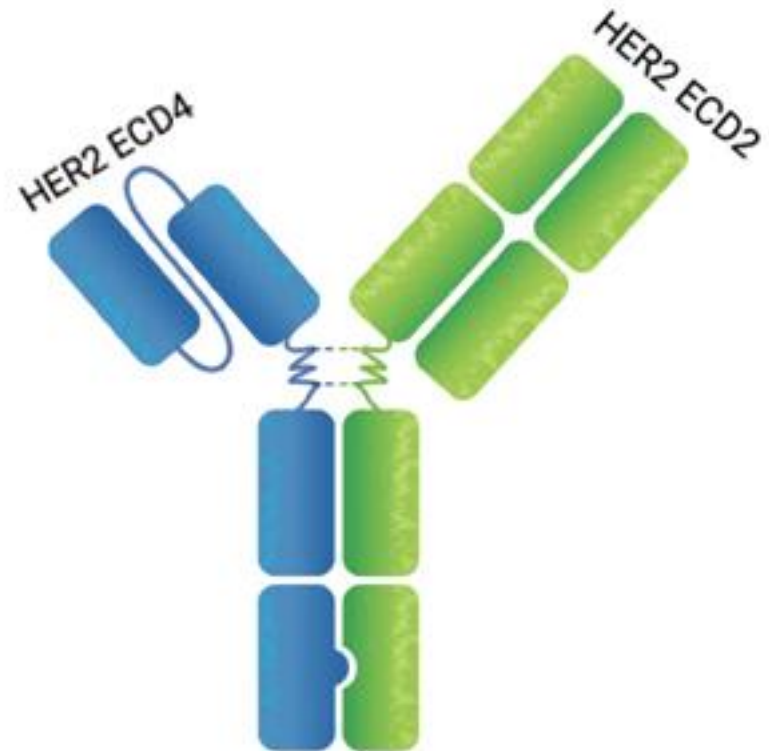
Specific Targetable GAs	Prevalence	Targeted Therapies
<i>EGFR</i>	4% to 13%	Erlotinib, Cetuximab
<i>HER2/neu</i> (amplification)	10% to 15%	Trastuzumab, Lapatinib, Pertuzumab, T-DMI
<i>ERBB3</i>	0% to 12%	Seribantumab (MM-121), Pertuzumab, Trastuzumab, T-DM1
<i>PTEN</i>	0% to 4%	mTOR inhibitors like Everolimus, AKT inhibitor like MK2206, PI3K inhibitors like BKM120, BYL719 and SF1126
<i>PIK3CA</i>	6% to 13%	mTOR inhibitors like Everolimus, AKT inhibitor like MK2206, PI3K inhibitors like BKM120, BYL719 and SF1126



Review



- Zanidatamab (ZW25)
 - a novel HER2-targeted, bispecific antibody
 - simultaneously binds two distinct sites on HER2
 - the ECD4 (trastuzumab)
 - the ECD2 (pertuzumab)



Review



Tumor shrinkage observed in majority of patients with response-evaluable measurable disease

ZW25, GB cancer DCR : 67%

